

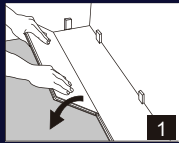


2000 NATURAL WALNUT

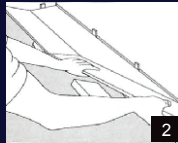
Novelty Specifications

Dimensions (L x W x T)	1215 mm x 145 mm x 8 mm
Surface Finish	Crystal Finish, V-Groove with paint
Texture	Wood Visual
Core Material	Brown
Click	Unilin
Edge Detail	V-Groove
Quantity per box in sqm/sqft	12 pieces
Carton dimensions	1235 mm x 165 mm x 106 mm
Net Weight per sqm	15.05 kgs/m²

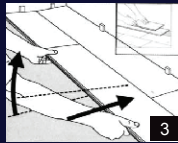
Our patented mechanical locking system makes professional quality installation as easy as:



LIFT  
Insert Plank  
Into Channel



LOCK  
Insert Long Edge of  
Second Plank into Channel



DROP  
Press Second Plank  
Forward and Fold Down

Performance

Bending Strength	≥ 44, ≤ 42.6 MPa
Moisture Content	6.50%
Density	≥ 0.96 g/cm³
Thickness Swelling	≤ 6%
Resistance to High and Low Temperature	No Fissure and Blister
Abrasion Resistance	AC4 - 32 Class
Internal Binding Force	≥ 1.3, ≥ 1.1 MPa
Surface Binding Force	≥ 1.2, ≥ 1.1 MPa
Resistance to Mark	Pass
Resistance to Cigarette	Pass
Impact Resistance	10 mm
Formaldehyde Release	0.4 mg/L
Surface Resistance to Staining	Pass
Surface Resistance Steam	Pass



AC4-32 CLASS

E1 ISO 9001 14001

Unilin Swedish Locking System

EN13329-32

15 Years Limited Warranty

10 Years Limited Warranty



6479 ASPEN WOOD

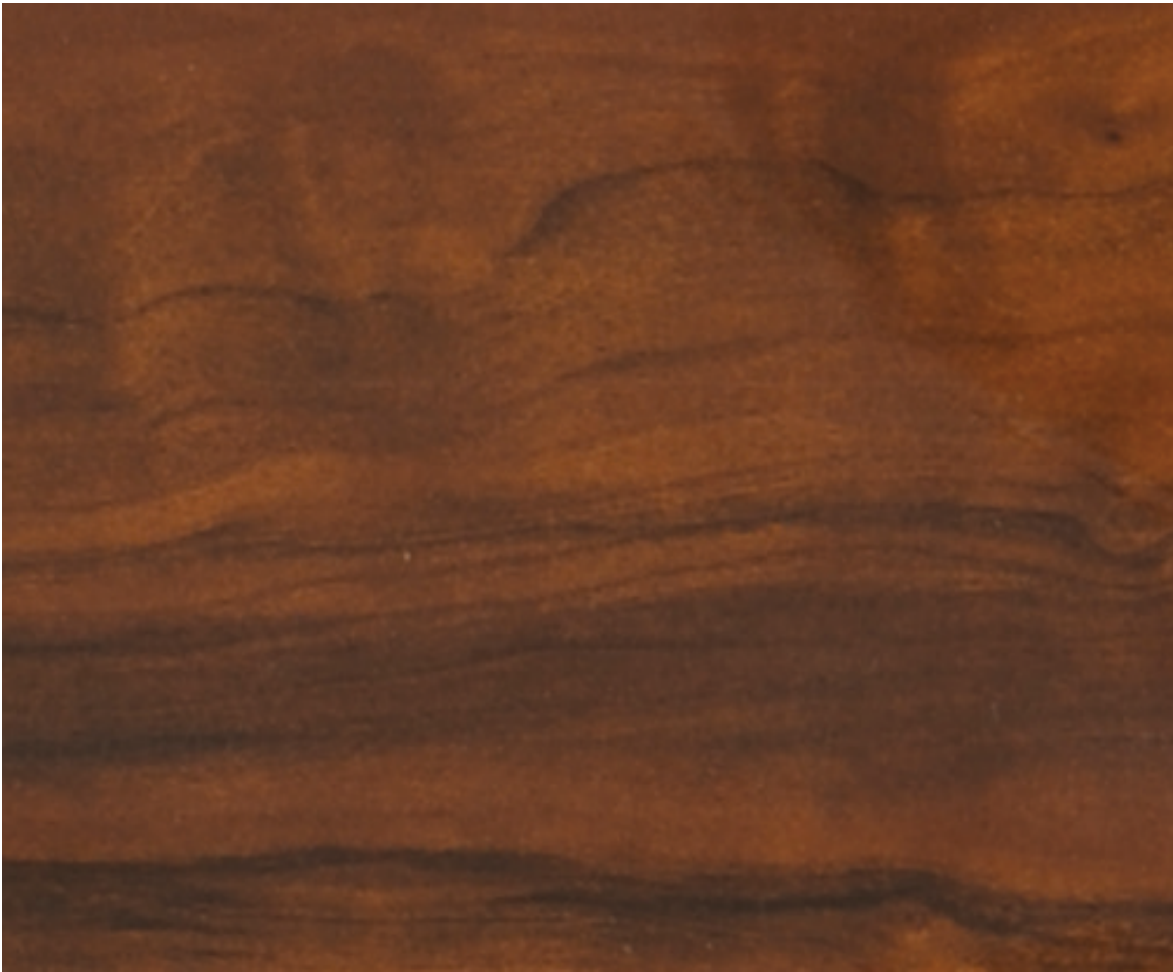


Novelty™  
Laminate Flooring





Design No.: **6400 Natural Wood**  
Surface Finish: **Crystal Finish, V-Groove with paint**  
Texture: **Wood Visual**



Design No.: **1228 Teak Wood**  
Surface Finish: **Crystal Finish, V-Groove with paint**  
Texture: **Wood Visual**



Design No.: **6479 Aspen Wood**  
Surface Finish: **Crystal Finish, V-Groove with paint**  
Texture: **Wood Visual**



Design No.: **2000 Natural Walnut**  
Surface Finish: **Crystal Finish, V-Groove with paint**  
Texture: **Wood Visual**



Design No.: **1900 American Mahogany**  
Surface Finish: **Crystal Finish, V-Groove with paint**  
Texture: **Wood Visual**